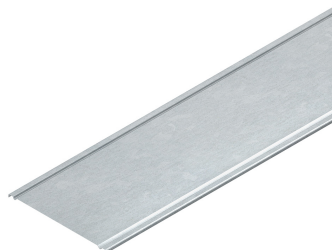


24104703 - Tandem 150 HDG Cover wire mesh tray L3m



Product data

Product code:	24104703
Brand:	Niedax Group
Series:	Gouda Wire Mesh
Type:	Tandem
EAN Code:	08719972001442
Technical description:	Tandem 150 HDG Cover wire mesh tray L3m
ETIM class:	EC002403 - Cover for cable support system

Technical data

RAL-number:	-
Surface protection:	Hot-dip galvanised
Material thickness:	-
Length:	3000
Material:	Steel
Type of fastening:	Cover clamp
Cover width:	150
Suitable for wire mesh tray:	Yes
Suitable for cable ladder:	No
Suitable for cable tray:	No
Stainless steel, pickled:	-
Suitable for circuit integrity:	No
Operating temperature:	-20 - 120