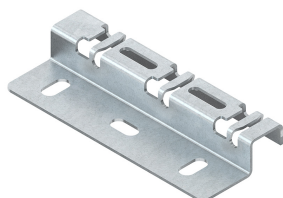


24310792 - Tandem ZP 30/150 PG Mounting bracket



Product data

Product code:	24310792
Brand:	Niedax Group
Series:	Gouda Wire Mesh
Type:	Tandem
EAN Code:	08719972002128
Technical description:	Tandem ZP 30/150 PG Mounting bracket
ETIM class:	EC001003 - Wall- and ceiling bracket for cable support system

Technical data

Model:	Other
RAL-number:	-
Surface protection:	Continuously galvanised
Material quality:	Other
Material:	Steel
Load bearing capacity:	-
Suitable for wire mesh tray:	Yes
Suitable for cable ladder:	No
Suitable for cable tray:	No
Tray mounting:	Retaining collar
Suitable for circuit integrity:	No
Suitable for cable support system width:	50 - 150
Operating temperature:	-20 - 120
Suitable for cable support system height:	- 110

