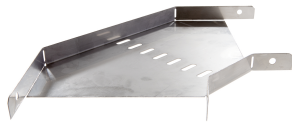


31264152 - Tray 28.150 PG Bend 90°



Product data

Product code:	31264152
Brand:	Niedax Group
Series:	Gouda Cable duct
Type:	Tray
EAN Code:	08719972011564
Technical description:	Tray 28.150 PG Bend 90°
ETIM class:	EC002400 - Bend for cable tray

Technical data

Operating temperature:	- - -
Model:	Integrated connector
RAL-number:	-
Surface protection:	Continuously galvanised
Material thickness:	1
Construction type:	Bend rigid
Side perforation:	No
Angle:	90°
Material quality:	Other
Material:	Steel
Bottom perforation:	Yes
Inner radius:	60
Suitable for cable tray width:	150
Suitable for cable tray height:	28
Change of direction:	Horizontal

NATO-mounting holes:	No
Stainless steel, pickled:	No
Suitable for circuit integrity:	No
With cover:	No
Bend model:	Segmental bend
