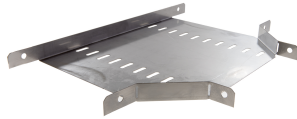


31307153 - Tray 28.300 HDG T-piece



Product data

| | |
|------------------------|-------------------------------|
| Product code: | 31307153 |
| Brand: | Niedax Group |
| Series: | Gouda Cable duct |
| Type: | Tray |
| EAN Code: | 08719972012424 |
| Technical description: | Tray 28.300 HDG T-piece |
| ETIM class: | EC001544 - Tee for cable tray |

Technical data

| | |
|---------------------------------|----------------------|
| Model: | Integrated connector |
| RAL-number: | - |
| Surface protection: | Hot-dip galvanised |
| Construction type: | T-piece horizontal |
| Material quality: | Other |
| Material: | Steel |
| Inner radius: | 60 |
| Suitable for cable tray width: | 300 |
| Suitable for cable tray height: | 28 |
| NATO-mounting holes: | No |
| Stainless steel, pickled: | - |
| Suitable for circuit integrity: | No |
| Operating temperature: | -20 - 120 |